

M&P GROUP



Environmental Awareness Guide

In recent years it has been impossible to avoid hearing about the global environmental problems such as:

- Global Warming & Climate Change
- Destruction of Tropical Rain Forests
- Continuing increase in CO₂emissions
- Increasing extinction rates
- Resource Depletion
- Reduction in Biodiversity



There are 4 main reasons for supporting a 'Greener' Environment

Moral... Doing your bit for the environment.

Legal... Environmental laws are here and getting stricter.

Financial... Efficient use of resources means saving money.

Loyalty... Environmentally friendly companies enjoy a good reputation.



Moral...

All businesses use energy, water and materials such as paper. If each UK company made just 5 fewer photocopies per day, we would save 2,500,000 reams of paper.



This would mean:

- Felling 200,000 fewer trees.
- Reducing the amount of landfill space being taken up.
- Reducing the amount of process energy, chemicals and transportation involved in paper manufacture.

Legal...

There is now more environmental legislation at National and European level than ever before. Most pollution incidents or breaches of waste laws are the result of poor awareness or poorly controlled procedures.



IGNORANCE IS NO DEFENCE. Courts take a very severe view of environmental offences.

Financial...

The efficient use of resources means saving money.

- Reduce Energy Consumption
- Routine and regular maintenance
- Reducing CO2 emissions



Loyalty...

Environmentally friendly companies enjoy a better reputation. Increasingly many large companies are looking to suppliers who take account of environmental issues.



What can we do to help?

- Turn off lights when not in use.
- Switch off equipment and plant when not in use.
- Report maintenance issues/problems.
- User greener transport/fuels and minimise use.
- Car share.
- Save energy.
- Follow waste disposal instructions and recycle efficiently.
- Save water where possible.



Read on to see how this can be carried out on site!

Site Procedures: Water

- Report dripping taps
- Do not overfill buckets or spray bottles
- Ensure all taps are turned off
- **DO NOT** waste water



Site Procedures: Electricity

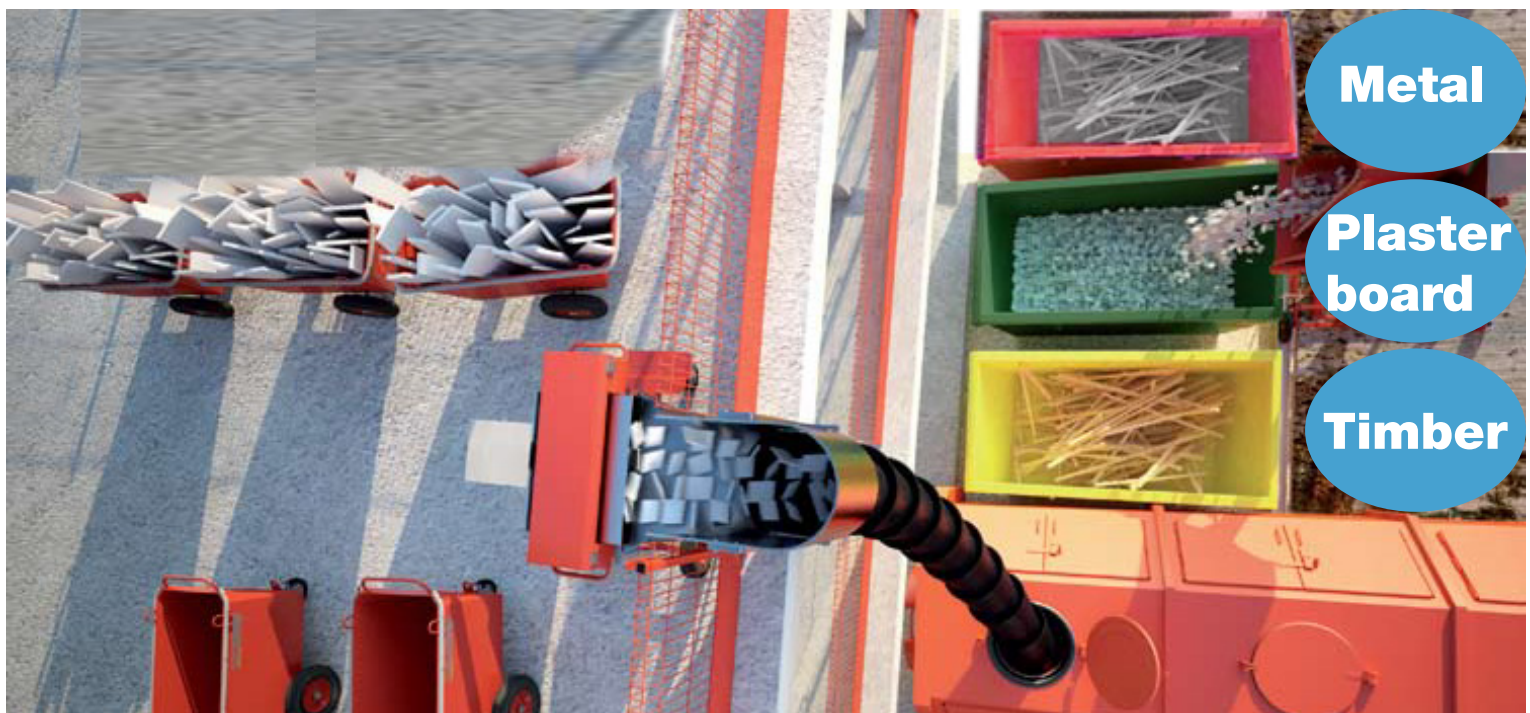
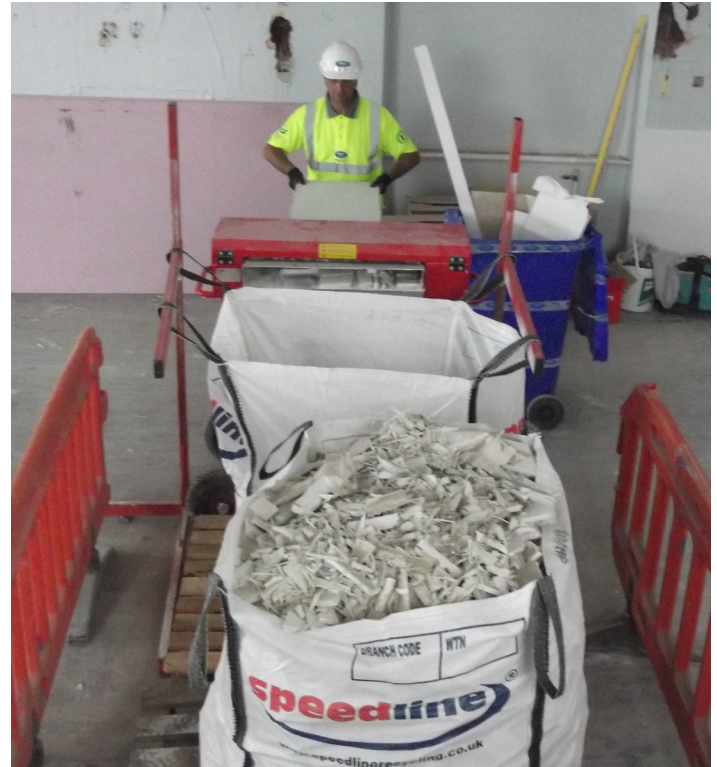
- Regularly service machines to ensure efficiency
- Only switch on plant and machines when ready to use them
- Switch off plant and machinery as soon as you finish using them
- Turn off lights whenever not in use
- DO NOT waste electricity



Site Procedures: Waste Disposal

Ensure that all waste is disposed of in the correct skip or compactor.

- Ensure that all waste is contained and that it does not fall onto the surrounding area.
- If skip or compactor is full, inform your supervisor so that it can be changed.



Metal

Plaster board

Timber

Plasterboard Breakdown & Disposal

Typically 10% of the plasterboard delivered to site will leave as waste. A standard 8m³ skip filled with un-chipped plasterboard will weigh approximately 1.6 tonnes. Using a Chipper would increase this figure to approximately 2.1 tonnes (a 30% increase). On smaller containers for example, 660 litre waste bins this volume could increase by as much as 60%.

Place the chipper at the work place or at the point of disposal.



Plasterboard Breakdown & Disposal

On a well organised site all waste processes are carefully planned. Waste can be delivered to a disposal skip by wheel bins or chutes, and must be segregated properly.



Set up an efficient waste disposal process, and remember to switch off all plant when you have finished using it!

As you can see, chipping the waste plasterboard provides a huge waste saving.

