

# M&P VISUAL METHOD/RISK/QUALITY SWANSEA UNIVERSITY

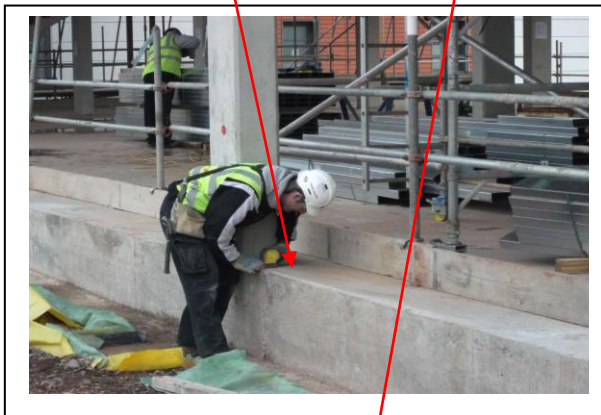
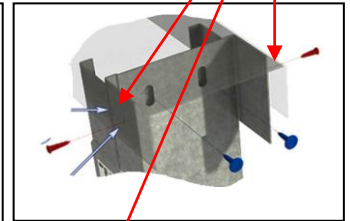
## INSTALLING METAL STUDS

### ALWAYS

Always plumb in walls after surveying structure to find proudest point.  
 Watch for sharp edges on cut studs & always wear your gloves.  
 Cut studs to correct size allowing for deflection.  
 Make sure studs are installed plumb, fixed into floor track & head track as deflection bracket detail so they can't fall out of the tracks.  
 Keep studs running in the same direction apart from door/window jam location.  
 Fix deflection bracket to head track and not the Stud.  
 Read the Project specific /detail installation pack.

### NEVER

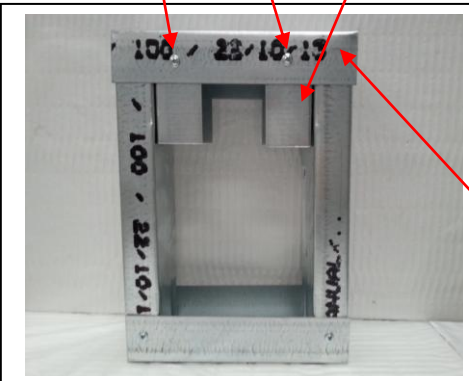
Cut studs on chop saw without Safety glasses.  
 Handle studs without wearing gloves.  
 Leave studs over the floor causing a trip hazard.  
 Screw fix a stud into head track as it will not allow for a deflection.  
 Only screw fix into head deflection bracket.



**ALWAYS**  
 Read the detail & specification docs for every Project.  
 Ask if unsure

**ALWAYS**  
 Ensure all head & floor track fixings are secure and fixed in line with the Project specification.

**ALWAYS**  
 Ensure to set studs out to the correct centres as drawings show. If unsure ask. Read the drawings carefully at all times.



**NEVER**  
 Fix stud into head track.

**THINK SAFE – DANGER NEVER SLEEPS...!!**